

THE

RESEPI

REMOTE SENSING PAYLOAD INSTRUMENT
FOR YOUR REMOTE SENSING BUSINESS

Datasheet
Rev 2.3



The Remote Sensing Payload Instrument - **RESEPI**[®] was designed as a cost-effective solution for extremely accurate Remote Sensing applications. **RESEPI**[®] utilizes a high-performance GPS-Aided Inertial Navigation System (INS) with Novatel RTK/PPK single or dual antenna GNSS receiver, integrated with a Linux-based processing platform. The processing platform contains a WiFi interface, external cellular modem to support RTCM corrections, datalogging software and automated post-processing. **RESEPI**[®] can be used with commercially available LiDARs like Hesai, Velodyne, Quanergy, Ouster, RIEGL, and LIVOX. LiDAR calibration software, Bore-sighting software, Point Cloud Software powered by Waypoint[®] Inertial Explorer from Hexagon | NovAtel[®], web-interfaces, and hardware. All components are mounted into one compact and light-weight enclosure and the bore-sighting and point cloud software powered by Waypoint[®] Inertial Explorer from Hexagon | NovAtel[®] is fully automated to provide optimized PPK results.

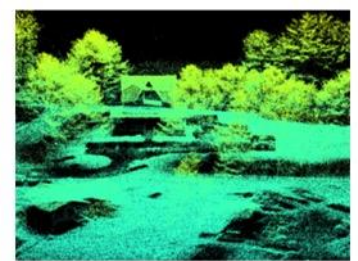
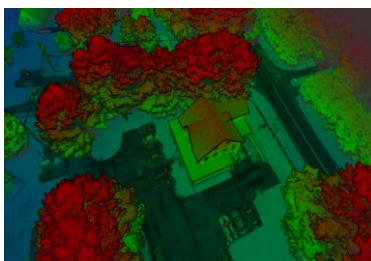


“Your LiDAR” **Velodyne LiDAR** **Quanergy LiDAR** **Ouster LiDAR** **Livox LiDAR** **Hesai LiDAR**

RESEPI[®] is completely modular. You can use your existing GNSS receiver or CEI can supply you with one. We provide everything for assembling, calibrating, and bore-sighting **RESEPI**[®].

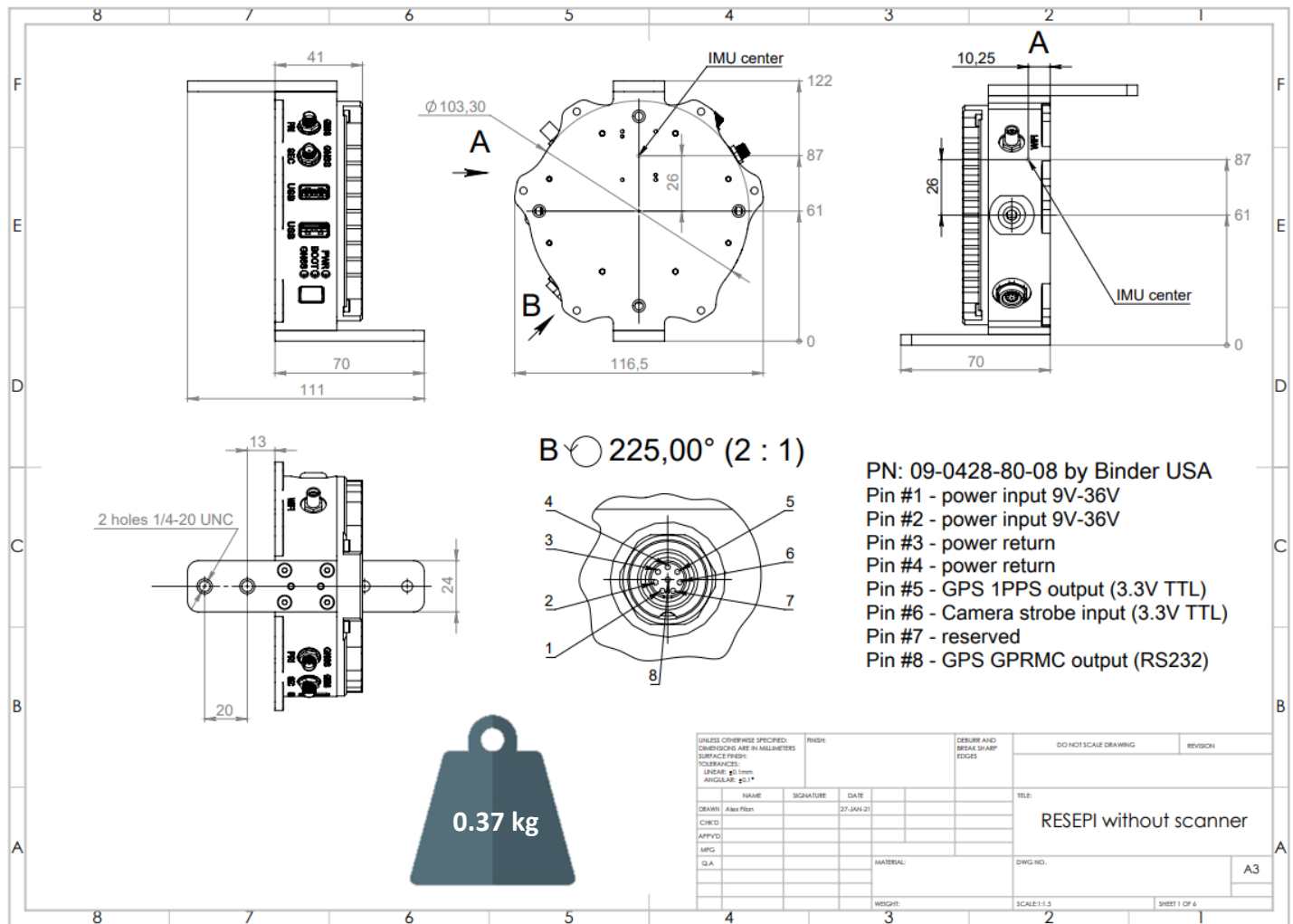
						
0.37 kg Weight w/o LiDAR	PPK / RTK Dual / Single GPS-Aided INS	Up to 1 TB USB Memory Drive	3 - 5 cm Point Cloud Accuracy	WiFi & GSM Embedded WiFi, Cellular Modem	Up to 200 m AGL - Above Ground Level	USB Camera Interface

RESEPI[®] is ALSO a complete remote sensing solution – LiDAR, all required cables, mounting brackets, vibration isolator, LiDAR Calibration, Bore-sighting, Post-Processing (PPK) and Point Cloud software utilizing the Waypoint[®] post-processing engine from Hexagon | NovAtel[®] are available upon purchase of the RESEPI.

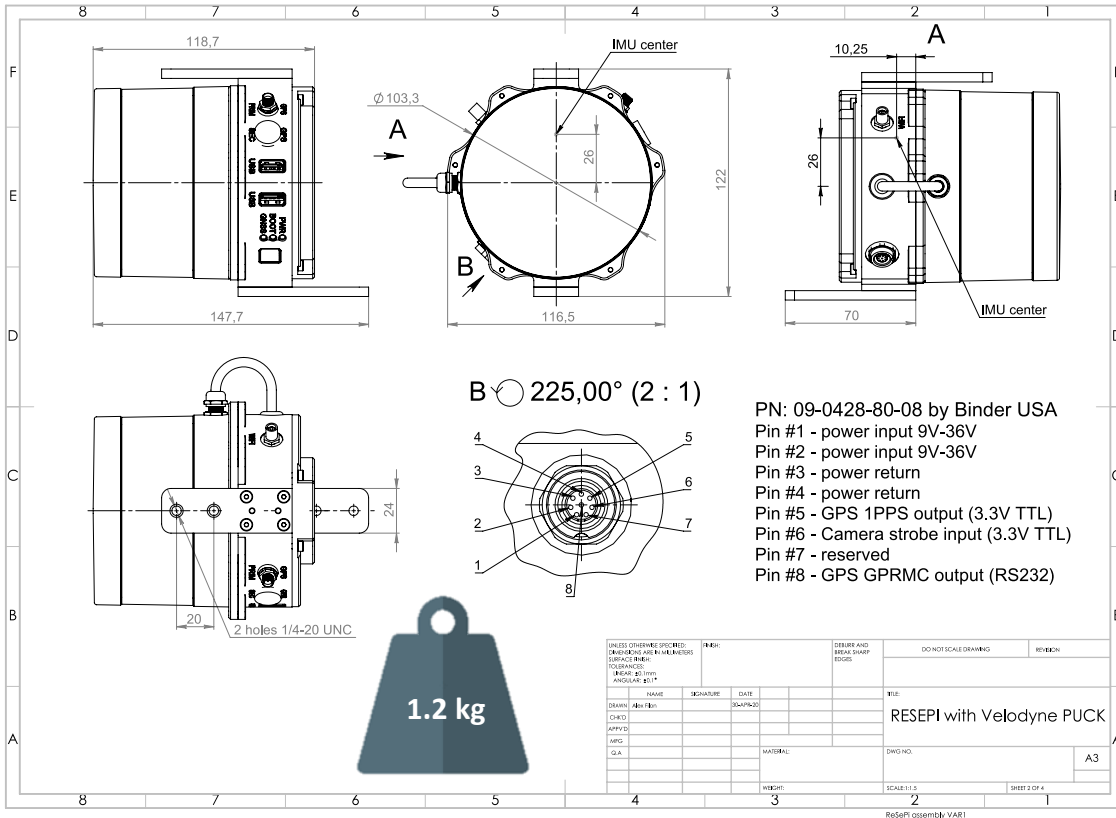


RESEPI[®] Specifications

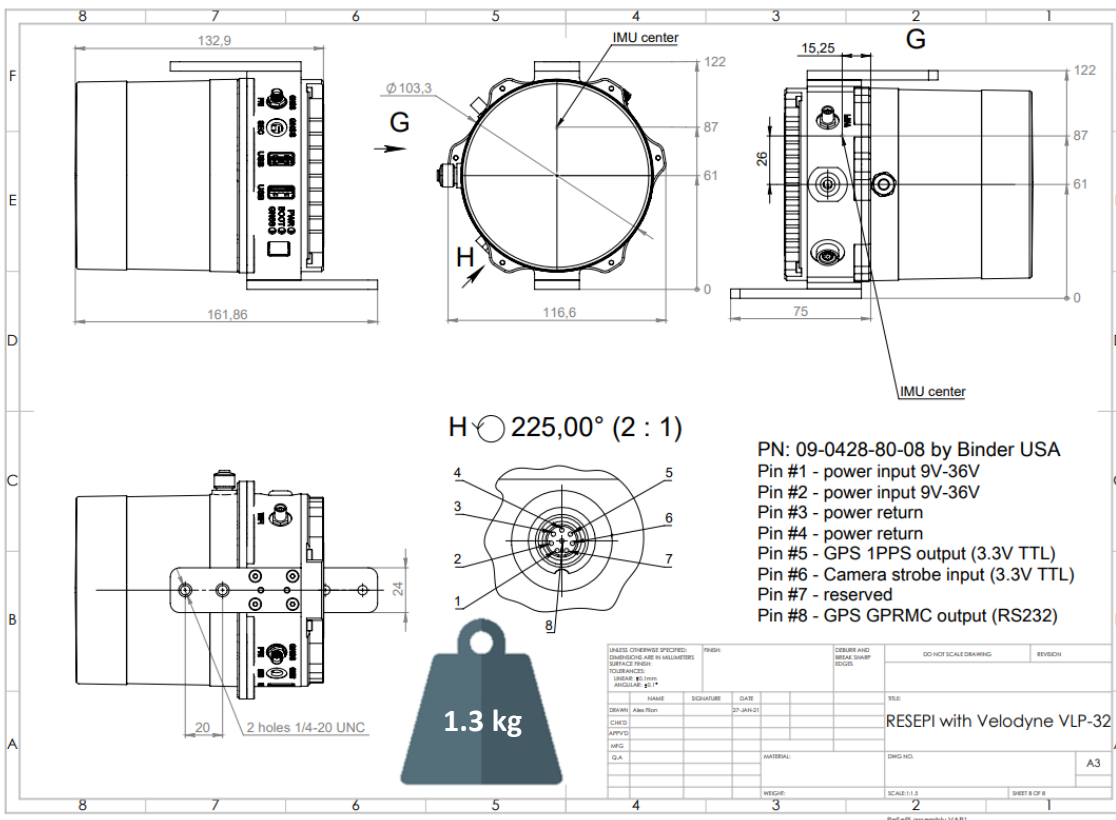
Weight	0.37 kg (circular enclosure w/o LiDAR); 0.42 kg (rectangular enclosure w/o LiDAR)
Power Consumption	12 W (with VLP-16 LIDAR)
Position Accuracy (GPS-Aided INS)	0.5 cm (PPK estimated) / 1 cm + 1 ppm (RTK)
Attitude Accuracy (GPS-Aided INS)	<0.01 deg Pitch & Roll; <0.05 deg Heading
Precision (Point Cloud)	3 - 5 cm (dependent on LiDAR, taken on the same target @ 50 m AGL)
Scanner field of View (FOV)	360 deg (depend on LiDAR selection)
Scanner (LiDAR)	VELOCYNE VLP / QUANERGY / RIEGL / OUSTER / Livox / Hesai
Inertial Navigation System	INS-B-OEM; INS-D-OEM
Type of recorded data	GNSS data for PPK; GNSS time-stamped INS & IMU data; GNSS time-stamped LiDAR scans; GNSS time-stamps for camera strobe pulses



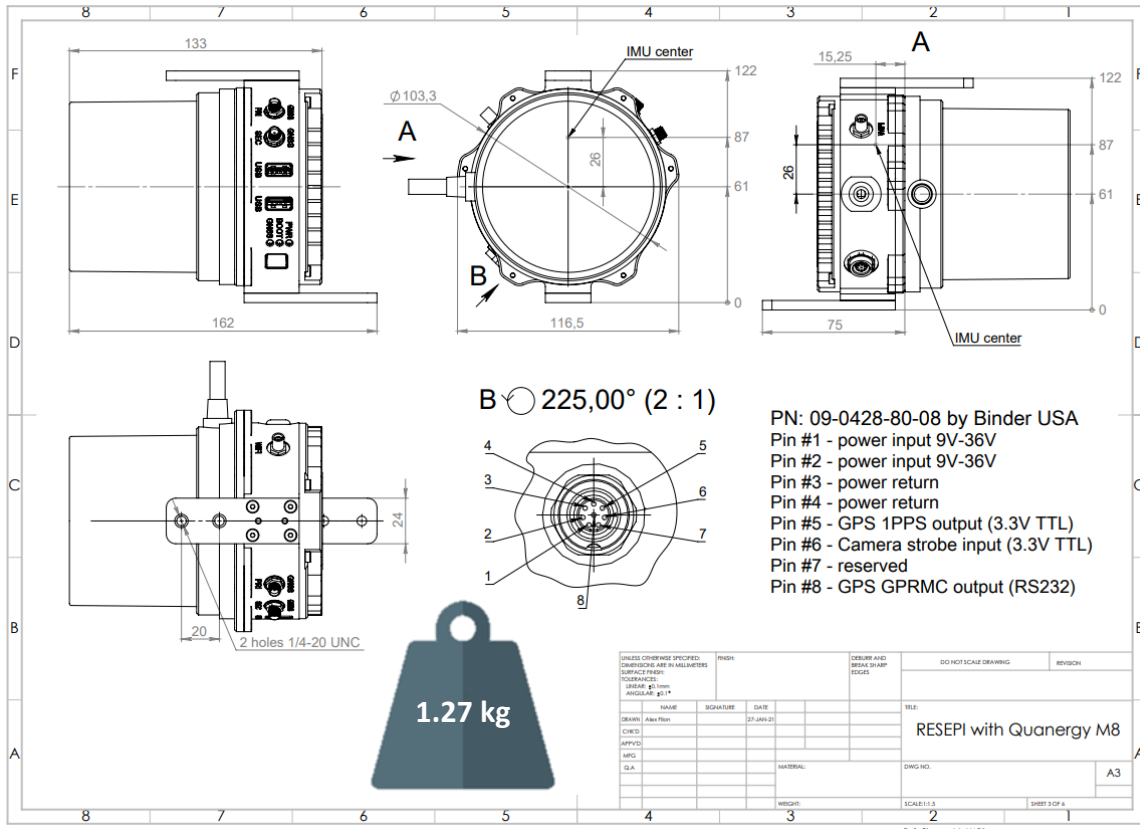
Note: All dimensions are in millimeters.



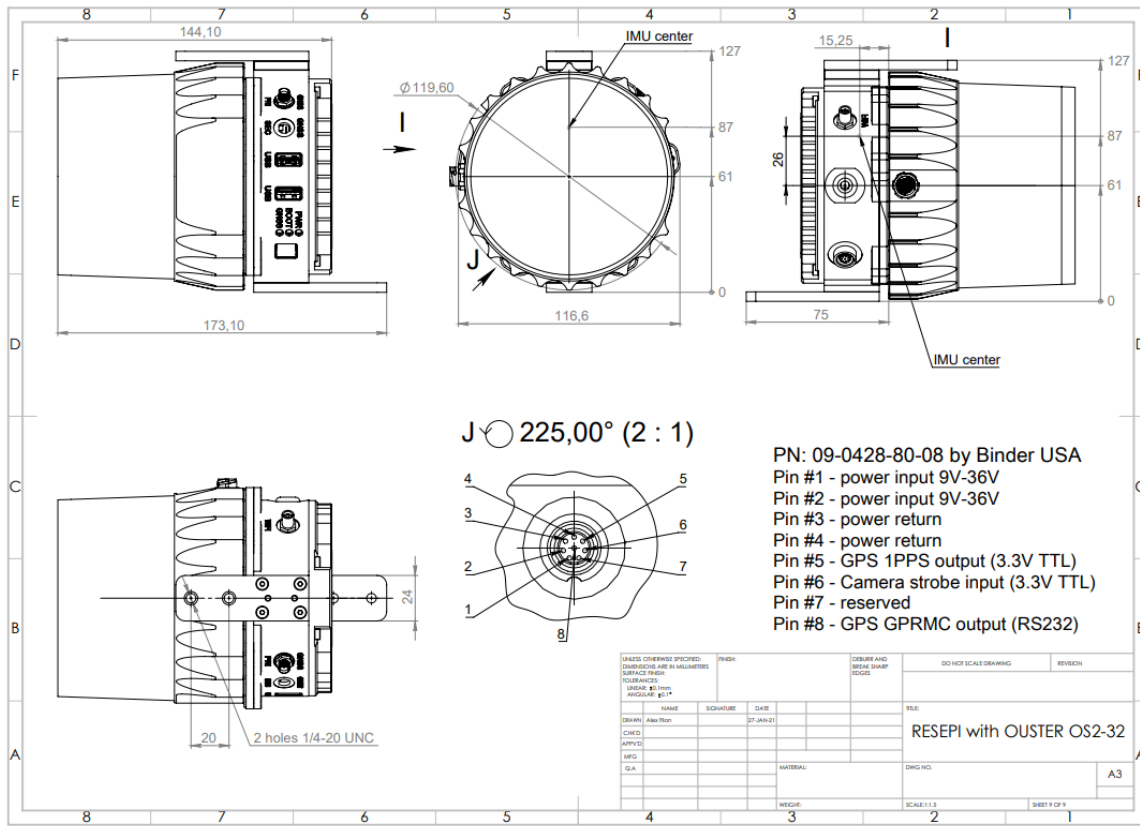
Note: All dimensions are in millimeters.



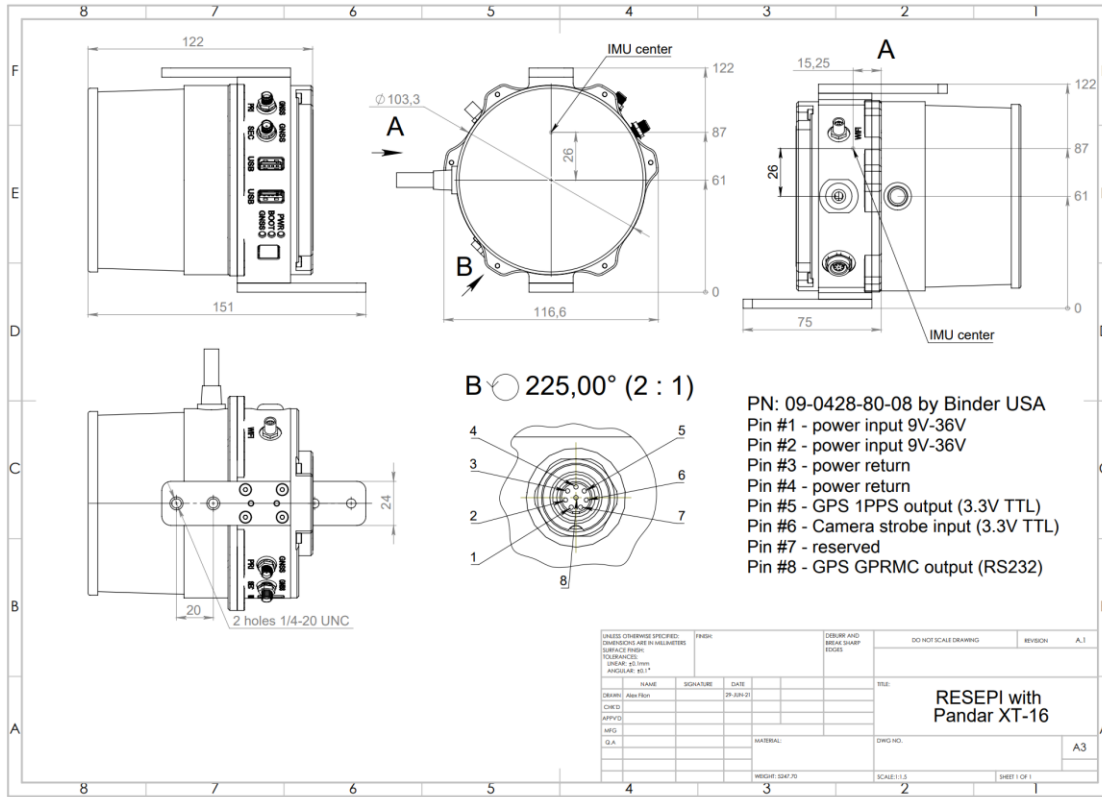
Note: All dimensions are in millimeters.



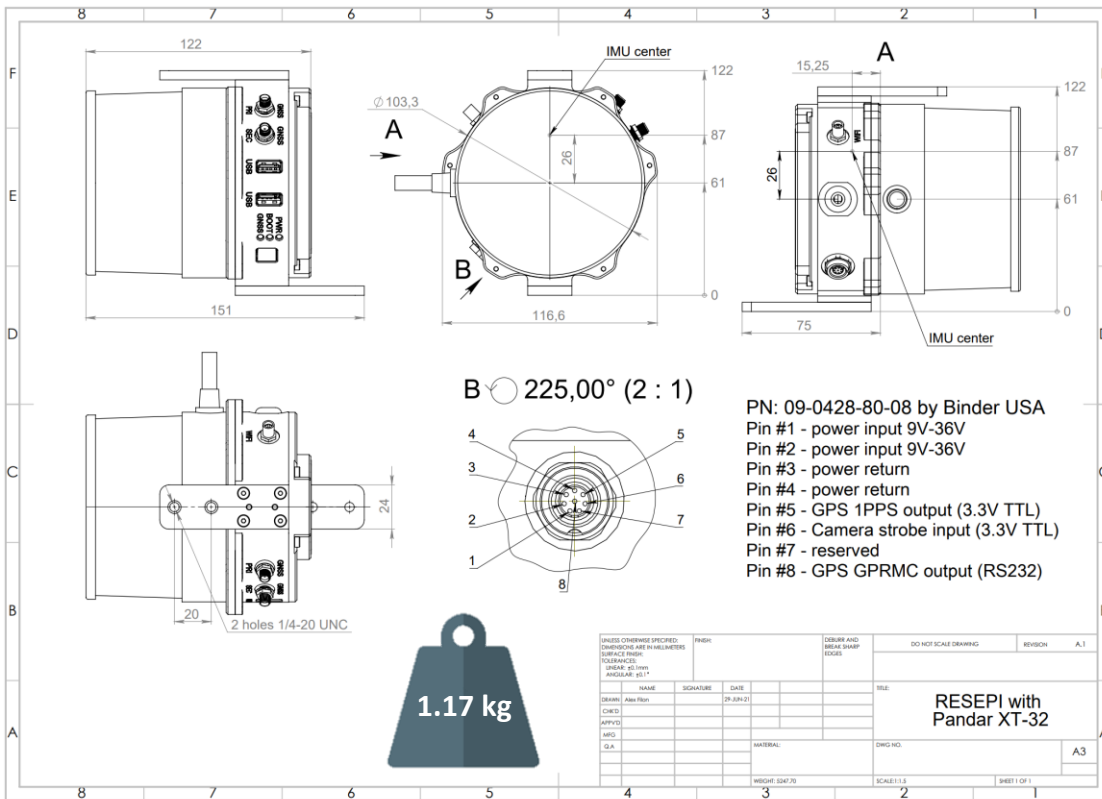
Note: All dimensions are in millimeters.



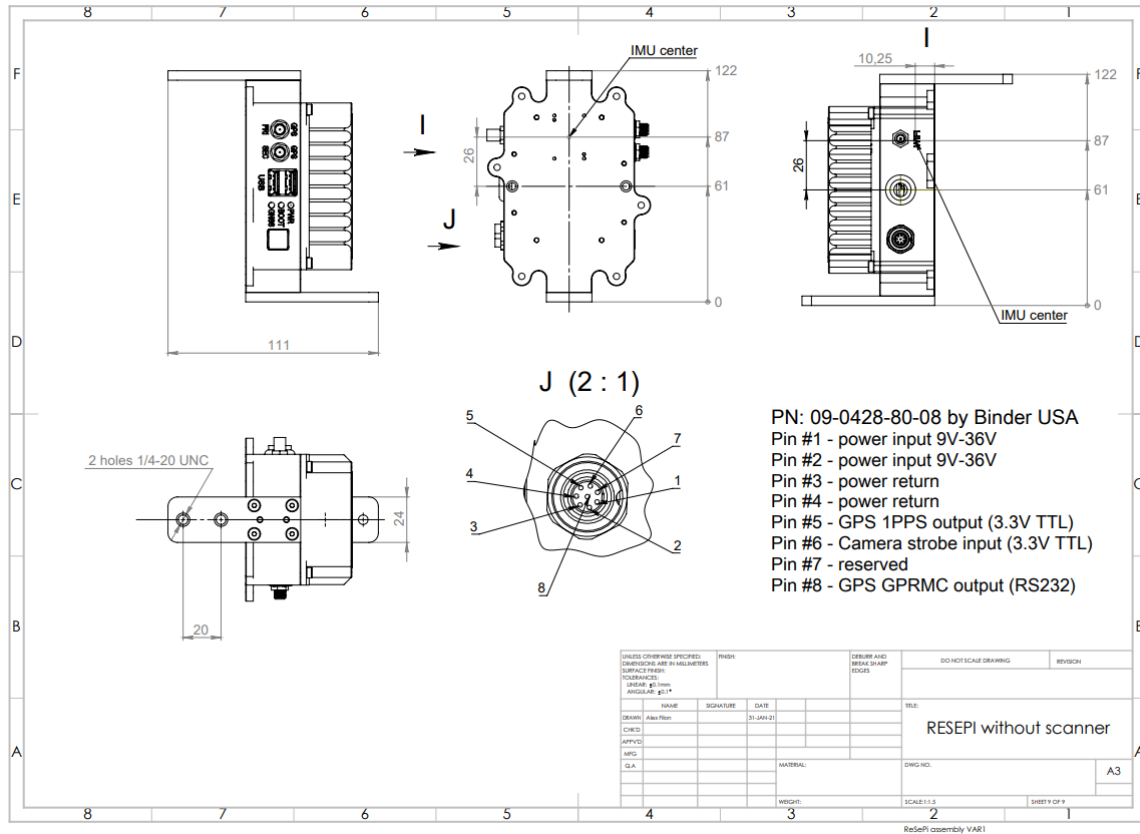
Note: All dimensions are in millimeters.



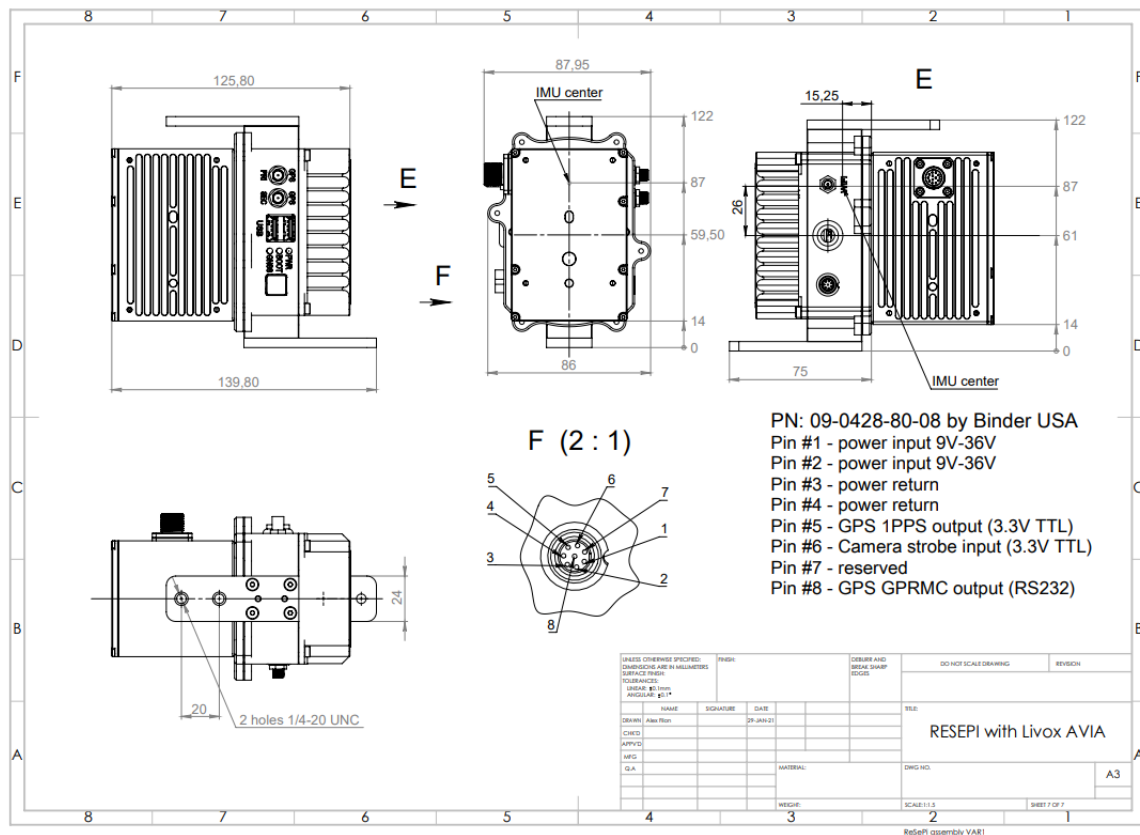
Note: All dimensions are in millimeters.



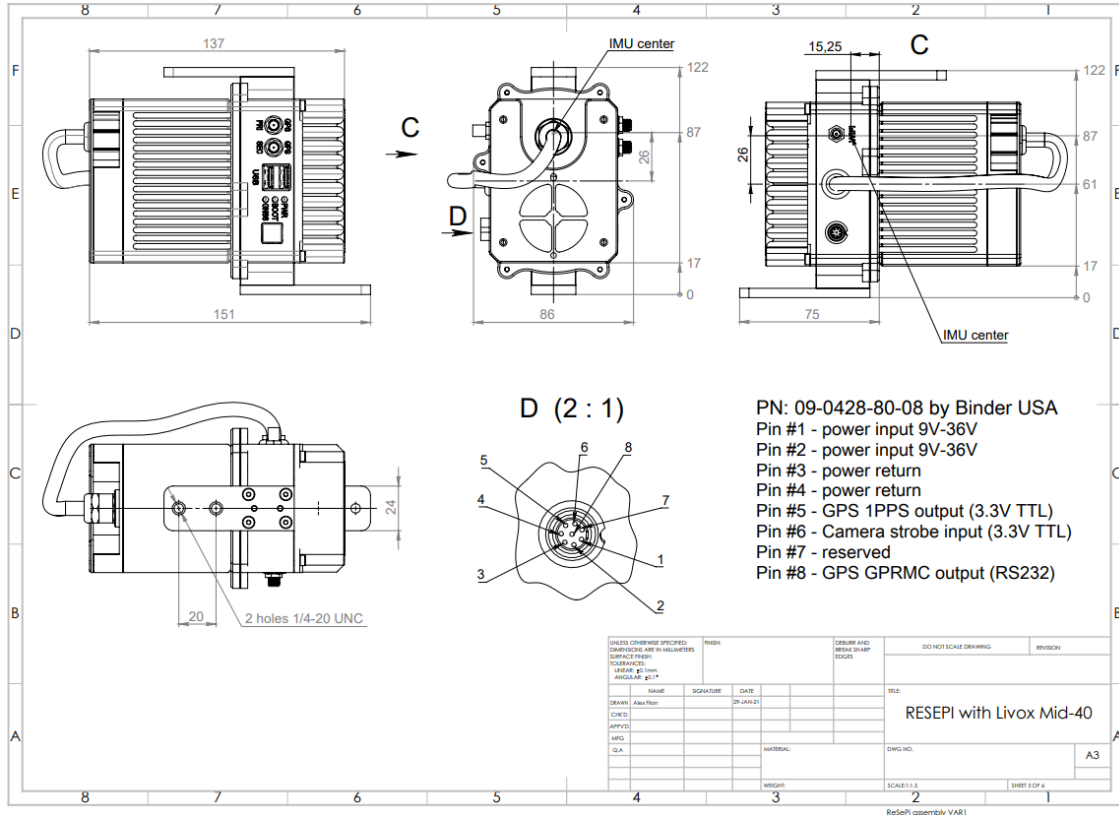
Note: All dimensions are in millimeters.



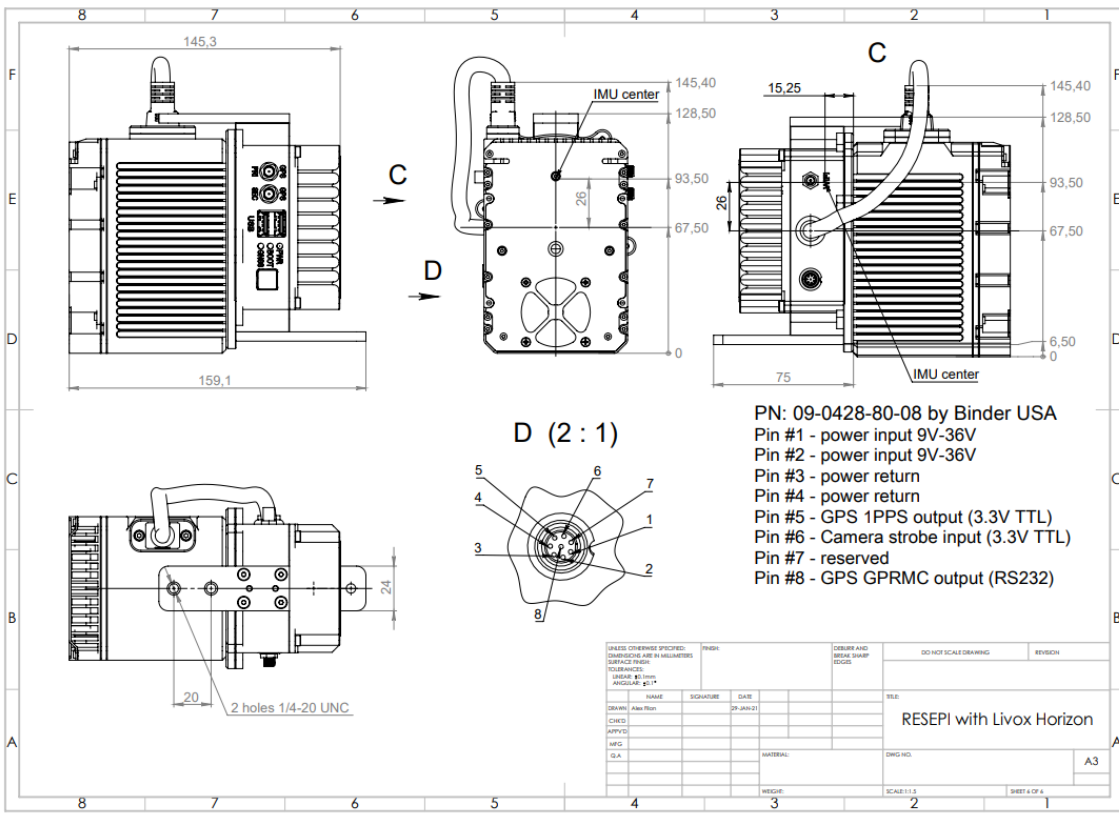
Note: All dimensions are in millimeters.



Note: All dimensions are in millimeters.



Note: All dimensions are in millimeters.



Note: All dimensions are in millimeters.

Disclaimer: All weights and measurements are subject to change without notice. Please obtain a final drawing before making a purchase.